



**VIKRANT ENGINEERING WORKS**  
An ISO 9001 : 2008 Certified Company

Registered Office :

18, R.N. Mukherjee Road, Kolkata - 700 001, W.B. India

P : +91 33 2248 7955, F : +91 33 2248 0989

E : mns\_2004@rediffmail.com, sales@vikrantengg.com

W : www.vikrantengg.com



**VIKRANT ENGINEERING WORKS**  
An ISO 9001 : 2008 Certified Company



**COMMITTED  
TO EXCELLENCE**





# INFRASTRUCTURE

The backing of a sound and well established infrastructure is what lays the foundation of a strong company. Vikrant Engineering Works is backed by the state-of-the-art manufacturing units which has helped it tremendously in acquiring a global reputation for its product quality and reliability after sales.

The company has set of CNC machines like HMC, VMC etc., Fibre Laser Machines, CMM, NC Pipe Bending Machine and other advance supporting machines require to execute the intricate product line of the locomotive spares. An excellently designed in-house quality testing department is deployed to supervise the quality of products manufactured by the company. This is manned by specially trained expert staff and each product is subjected to comprehensive inspection and functional checks.

# ABOUT VIKRANT



Established in the year 1985, Vikrant Engineering is a privately owned company engaged in manufacturing and supplying of locomotive parts. The product line of the company includes ALCO Locomotive Manifold Assembly, GM Locomotive Manifold Assembly & Spares. With a burning desire to succeed and tireless endeavor, the company aims to be the dependable and preferred supplier in the industry.

The company has a state-of-the-art manufacturing units where it implements and adheres to robust processes. With the dedication of our Staff and the encouragement and support of our customers, we are proud to display the magnificent saga of unparallel track of performance. At Vikrant you can expect nothing less than the best in terms of selection, quality and service, without sacrificing competitive pricing or personal integrity.

There are many milestones which have enabled the company to grow step by step. The company is today exporting its products to United States, Canada & South East Asia.

The company maintains an internal culture of technical excellence and congenial relationships. It aims to be the employer of choice for exceptionally talented engineers whose practice and client-service interests align with those of the company.



# VISION & MISSION

The sole mission of the company is to provide quality solutions to the railway engines on the cutting edge technology. It aims to maintain self evaluation for the betterment and excellence, and the commitment towards its clients to climb the success ladder.

The company further visualizes to achieve the following :

- To improve the customers competitive position and profits by providing superior products.
- To value technology leadership and practice innovation as the foundations for producing solutions of exceptional value for our clients
- To evaluate and improve our practice capabilities and invest in training our team members to develop new capabilities in response to changing client needs.



PRODUCTS

ALCO LOCOMOTIVE  
MANIFOLD ASSEMBLY

Description of Items	Alco Cat No.
Exhaust Manifold Sub Assly.	22816076
Flexible Metal Tubing Sub Assly.	22813518
Centre Section	22813519
End Cap Assly.	22823073
Coupling 60 Deg. 'V' Band	2282062
Bellow Connector	8281052
Bellow Connector (Upper)	22820147
Bellow Connector (Lower)	22820143
'V' Band Coupling (Double Bolt)	2282067



Exhaust Manifold Sub Assembly  
22816076-1



Centre Section  
22813519



Flexible Metal Tubing Sub Assembly  
22813518



'V' Band Coupling (Double Bolt)  
2282067



Coupling 60 Deg. 'V' Band  
2282062



Bellow Connector (Upper)  
22820147



Bellow Connector (Lower)  
22820143



Bellow Connector  
8281052



GM LOCOMOTIVE  
MANIFOLD ASSEMBLY

Description of Items	GM / EMD PT. NO. / DRG. NO.
Exhaust Manifold Assly.	40071914
Exhaust Chamber	9316231 / 40121220
Exhaust Chamber	9316232 / 40121219
Exhaust Chamber	9316233 / 40121218
Exhaust Chamber	10624476 / 40121217
Adapter & Screen Assly.	9557143
Screen	9526330
Expansion Joint Assly.	8408987
Expansion Joint Assly.	8408985
Spacer Bolt Assly.	40055467
Gasket	9571663
Gasket	40026936
Gasket	40026937
Gasket	40026938
Gasket	40026939
Gasket	40055466
Exhaust Duct Assly.	9529830



Exhaust Chamber  
9316231 / 40121220



Exhaust Chamber  
9316232 / 40121219



Exhaust Chamber  
9316233 / 40121218



Exhaust Chamber  
10624476 / 40121217



Adapter & Screen Assembly  
9557143



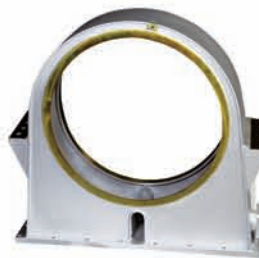
Screen  
9526330



Expansion Joint Assembly  
8408987



Expansion Joint Assembly  
8408985



Exhaust Duct Assembly  
9529830



Gasket  
9571663 / 40026936 / 40026937  
40026938 / 40026939 / 40055466



Exhaust Manifold Assembly  
40071914



# PRODUCTS

## FLEX COUPLINGS



SL.NO.	COUPLING ASSEMBLY		COMPONENT REFERENCE		
	Pipe Size (in inches)	Complete Assembly (Emd Part No.)	Seal (Emd Part No.)	Bolt (Emd Part No.)	Nut (Emd Part No.)
1	0.5	8476711	8479519	8478318	8032757
2	0.5	9559888	8479519	8478318	8032757
3	0.75	8479674	8479520	8478318	8032757
4	0.75	8470605	8479520	8478318	8032757
5	1.00	8470340	8479521	8478319	8032758
6	1.00	8476174	8479521	8478319	8032758
7	1.00	8472849	8479521	8478319	8032758
8	2.00	8474757	8479524	8478319	8032758
9	2.00	8479676	8479524	8478319	8032758
10	2.50	8392458	8479525	8478320	8032759
11	2.50	8472617	8479525	8478320	8032759
12	2.50	8472616	8479525	8478320	8032759
13	2.50	8275374	8479525	8478320	8032759
14	2.50	8284779	8479525	8478320	8032759
15	2.50	9516671	8479525	8478320	8032759
16	3.00	8471160	8479526	8478320	8032759
17	3.00	8468179	8479526	8478320	8032759
18	4.00	8252895	8479528	8478320	8032759
19	4.00	8474741	8479528	8478320	8032759
20	4.00	8470341	8479528	8478320	8032759
21	4.00	8347788	8479528	8478320	8032759
22	5.00	9559099			

SL.NO.	ELBOW 90° ASSEMBLY		COMPONENT REFERENCE		
	Pipe Size (in inches)	Complete Assembly (Emd Part No.)	Seal (Emd Part No.)	Bolt (Emd Part No.)	Nut (Emd Part No.)
1	3.00	8455470	8479526	8478320	8032759

## OTHER PRODUCTS

Stainless Steel, Aluminium & Alloy  
Steel fabrications

- Aluminium Doors for electric loco
- Wind Screens for electric loco
- Stainless Steel louvres for electric loco
- Stainless Steel Panels for electric loco
- Aluminium Windows for electric loco
- Side Sash Assembly for diesel loco
- Filter Frame Assembly for electric loco
- Filter Assembly for electric loco
- Ducting Assembly for electric loco



Metallic Pipe for Electric Loco Transformer Oil Tank



Metallic Pipe for Electric Loco Transformer Oil Tank



Metallic Pipe for Electric Loco Transformer Oil Tank



Filter Assembly for Electric Loco



Stainless steel Panels